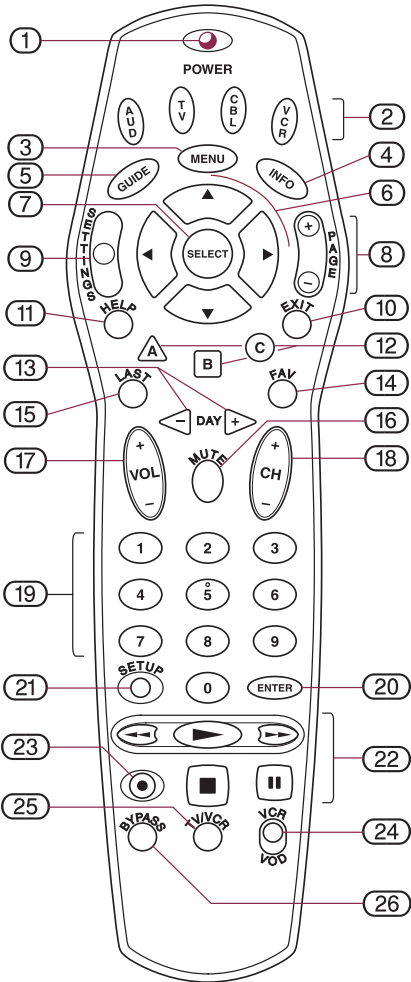


# Operating Instructions

## REMOTE CONTROL

### BR-360



## What it does

The BR-360 operates all Pioneer *Voyager* BD-V1000/BD-V3000 series Digital Home Terminals, as well as some home terminal models from other manufacturers. You need the BR-360 to experience all the viewing options *Voyager* offers, because you can't access all *Voyager* functions from the Home Terminal front panel keys or from other brand remotes.

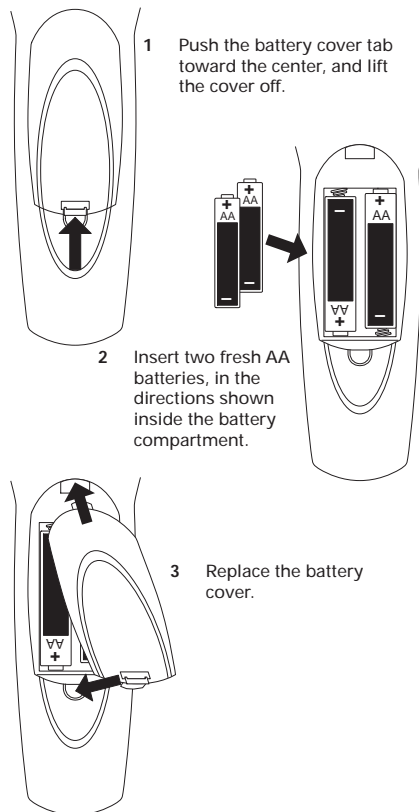
The BR-360 also supports basic remote control functions for nearly all TVs, VCRs, stereo receivers/amplifiers, and some DVD players. You don't have to remember to switch "modes" with the BR-360 — each key always transmits to one device.

This instruction sheet contains setup instructions and device codes. Keep this sheet in case you need to set up the BR-360 remote again in the future.

## Batteries

Two AA batteries power the BR-360.

To install batteries:



## BR-360 keypad

The BR-360 operates your *Voyager* Home Terminal, TV, VCR, and audio equipment (stereo receiver/amplifier). *Certain keys only operate certain devices.* Keys that work together are clustered to make them easier to locate.

Each key is described below. These are basic descriptions only. Refer to the manual(s) that came with your Home Terminal to learn how to use the keys.

The device(s) in parentheses are those the key will operate. For example, note that item 18 below (CH +/-) will change the channel on the *Voyager* terminal only, not on the TV or the VCR. Before you can use the BR-360 to operate your TV and other equipment, see **Programming your BR-360** below to learn how to set up the BR-360.

*Note:* Some keys designated "Voyager" may not operate with some versions of home terminal hardware or software.

### Indicator

- ① **Indicator light**  
Blinks when the remote transmits a command. Also helps you during setup.

### Power control

- ② **AUD, TV, CBL, VCR: Device power keys** (*Audio, TV, Voyager, VCR/DVD player*)  
Turn power of these devices on/off.

### On-screen operations

- ③ **MENU: Main menu access key** (*Voyager*)  
Displays the menu of *Voyager* features.
- ④ **INFO: Information key** (*Voyager*)  
Displays information about the program currently playing or highlighted in the program guide.
- ⑤ **GUIDE: Interactive program guide key** (*Voyager*)  
Displays the program guide listings.
- ⑥ **▲, ▶, ▼, ◀: Display navigation keys** (*Voyager*)  
Highlight an item from the on-screen choices.
- ⑦ **SELECT: Display action key** (*Voyager*)  
Activates the highlighted item.
- ⑧ **PAGE +/-: Page rocker key** (*Voyager*)  
Accesses pages above or below the information currently displayed.
- ⑨ **SETTINGS: Voyager settings menu key** (*Voyager*)  
Displays the menu of preferences for your *Voyager* home terminal.

- ⑩ **EXIT: Exit key** (*Voyager*)  
Hides all on-screen graphics and returns you to regular TV viewing.
- ⑪ **HELP: Help access key** (*Voyager*)  
Displays helpful information about *Voyager* operation.
- ⑫ **A, B, C: Function keys** (*Voyager*)  
Make direct selections from on-screen menus.
- ⑬ **DAY +/-: Program guide day skip keys** (*Voyager*)  
Skip forward or backward a whole day in the program guide.

### Channel/volume control

- ⑭ **FAV: Favorite channel recall key** (*Voyager*)  
Tunes channels previously stored in the *Voyager* terminal's favorite channel memory.
- ⑮ **LAST: Last channel recall key** (*Voyager*)  
Accesses the previously tuned channel.
- ⑯ **MUTE: Mute key** (*Audio, TV, or Voyager*)  
Silences the audio. Press to activate. Press this key again to restore sound to the previous level.
- ⑰ **VOL +/-: Volume rocker key** (*Audio, TV, or Voyager*)  
Raises or lowers the sound level.
- ⑱ **CH +/-: Channel rocker key** (*Voyager*)  
Selects the next higher or lower channel.
- ⑲ **0 - 9: Numeric keys** (*Voyager*)  
Directly tune channels by number. Also make numeric entries in on-screen menus.
- ⑳ **ENTER: Enter key** (*Voyager*)  
Immediately tunes the channel number you've just entered.

### BR-360 programming

- ㉑ **SETUP: BR-360 setup key**  
Starts programming your BR-360.

### VCR/DVD/VOD operations

- ㉒ **◀, ▶, ⏪, ■, ⏩: Transport keys** (*VCR, DVD player, or Voyager*)  
Activate play (▶), rewind (◀◀), fast-forward (▶▶), stop (■), and pause (⏪) functions of your VCR or DVD player. Take the same actions on Video-On-Demand programming through the *Voyager* terminal. Determined by position of VCR/VOD toggle switch (24).
- ㉓ **●: Record key** (*VCR*)  
Starts recording on your VCR.

- ㉔ **VCR/VOD: VCR/VOD toggle switch**  
Selects the device to which the BR-360 transport keys (22) transmit. Slide to "VCR" to send transport/pause commands to your VCR or DVD player. Slide to "VOD" to pause, scan forward/backward, stop, and resume play of a current Video-On-Demand program.
- ㉕ **TV/VCR: TV/VCR key** (*VCR*)  
Toggles the VCR's TV/VCR switch.

### RF Bypass control

- ㉖ **BYPASS: RF Bypass key** (*Voyager*)  
Toggles the *Voyager*'s optional RF Bypass switch.

## Programming your BR-360

### Setup for Voyager Home Terminal

No setup is required. The BR-360 is ready to run the *Voyager* Home Terminal.

### Setup for TV operation

Find your TV brand and its three-digit codes under **TV setup codes** on the back of this sheet. If your brand is not listed, go to **Searching the code library** instead.

- Turn on the TV.
- Press and hold **SETUP**. The indicator light comes on. Keep holding until the light goes off.
- Release **SETUP**. The indicator light blinks once.
- Press **TV**.
- Enter the three-digit code. Indicator light blinks twice to confirm acceptance.
- Point the BR-360 toward the TV.
- Press **TV**. *Did the TV turn off?*

**Yes:** *Setup complete.* Write down the three-digit setup code below for future reference.

**No:** Try setup again starting from step 2, using the next code listed for your brand. If you've tried all codes for your brand without success, use the method under **Searching the code library**.

My TV setup code is:

### Setup for VCR or DVD player operation

You can choose to control either your VCR or your DVD player. For VCR setup, find the VCR brand and its three-digit codes under **VCR setup codes** on the back of this sheet. If your brand is not listed, go to **Searching the code library**.

- Turn your VCR on.

- Press and hold **SETUP**. The indicator light comes on. Keep holding until the light goes off.
- Release **SETUP**. The indicator light blinks once.
- Press **VCR**.
- Enter the three-digit code. Indicator light blinks twice to confirm acceptance.
- Point the BR-360 toward the VCR.
- Press **VCR**. *Did the VCR turn off?*

**Yes:** *Setup complete.* Write down the three-digit setup code below for future reference.

**No:** Try setup again starting from step 2, using the next code listed for your brand. If you've tried all codes for your brand without success, try the method under **Searching the code library**.

For DVD player setup, find your DVD player brand and its three-digit codes under **DVD player setup codes** on the back of this sheet. Then follow the above VCR instructions using your DVD player and code.

My VCR or DVD player setup code is:

### Setup for stereo receiver/amplifier operation

Find the audio equipment brand and its three-digit codes under **Stereo receiver/amplifier setup codes** on the back of this sheet. If your brand is not listed, go to **Searching the code library**.

- Turn your receiver (or amplifier) on.
- Press and hold **SETUP**. The indicator light comes on. Keep holding until the light goes off.
- Release **SETUP**. The indicator light blinks once.
- Press **AUD**.
- Enter the three-digit code. Indicator light blinks twice to confirm acceptance.
- Point the BR-360 toward the receiver.
- Press **AUD**. *Did the receiver turn off?*

**Yes:** *Setup complete.* Write down the three-digit setup code below for future reference.

**No:** Try setup again starting from step 2, using the next code listed for your brand. If you've tried all codes for your brand without success, try the method under **Searching the code library**.

My receiver/amplifier setup code is:

**Pioneer**

© 2001, Pioneer New Media Technologies, Inc.  
2265 East 220th Street  
Long Beach, CA 90810 USA  
telephone: (310) 952-2111  
http://www.pioneerbroadband.com  
<C 029 AAC>

